

# Christie Vive Audio LS Series

## LS2C line source ceiling loudspeaker



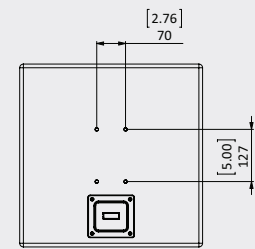
| Specifications                         | Christie LS2C   |
|--|---|
| System type                            | • Coaxial, two-way, passive, ported enclosure   |
| Driver components                      | • 2" annular ribbon HF driver with Kapton® diaphragm, Neodymium magnets and 1.2" exit coaxially mounted within 12" paper Kevlar composite cone driver |
| Crossover                              | • Linear phase, 2-way, passive @ 1.7 kHz, 12 dB/octave  |
| Frequency response <sup>1</sup>        | • 80 Hz-20kHz @ -3dB  |
| Effective frequency <sup>1</sup> range | • 50 Hz-25kHz @ -10dB   |
| Maximum SPL <sup>2</sup>               | • 122.3 dB (AES) continuous<br>• 124 dB long term<br>• 126.8dB short term   |
| System coverage <sup>3</sup>           | • 100° spherical cone   |
| Sensitivity <sup>1</sup> , 1W/1m       | • 97.5 dB (200Hz-4kHz)  |
| Power handling capacity <sup>2</sup>   | • 300W (2 hour continuous)<br>• 450W (IEC long term)<br>• 850W (IEC short term)   |
| Recommended amplifier power            | • 450W - 850 W @ 8 ohms   |
| Rated impedance                        | • 8 ohms  |
| Input connectors                       | • 2 position terminal barrier strip   |
| Enclosure                              | • Ported alignment<br>• 18mm marine plywood<br>• Heavily damped and braced  |
| Mounting options                       | • Rear mounted using 4 x M8 points<br>• Side mounted using 2 x M8 points  |
| Accessories                            | • Allen Products MultiMount MM-3RDX-18 (111-683209-01)<br>• Allen Products UB-0950  |
| Dimensions                             | • (HxWxD) 17.52 x 17.52 x 10.87" (445x 445 x 276 mm)  |
| Net weight                             | • 31lbs (14kg)  |
| Warranty                               | • Limited 5-year warranty   |

<sup>1</sup> Measured at distances of 1m in simulated free field conditions. Sensitivity is calculated based on measured SPL response averaged in 200Hz-4 kHz range.

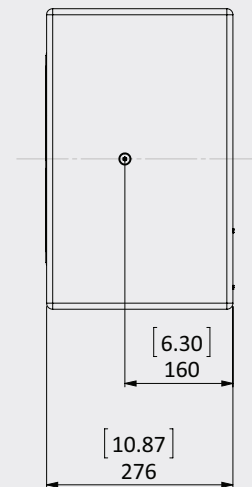
<sup>2</sup> Continuous power handling tested for 2 hours using IEC noise signal. IEC refers to IEC 60268-5 standard. Max SPL calculated based on sensitivity and power handling.

<sup>3</sup> Averaged in 500Hz-10kHz range, at -6dB.

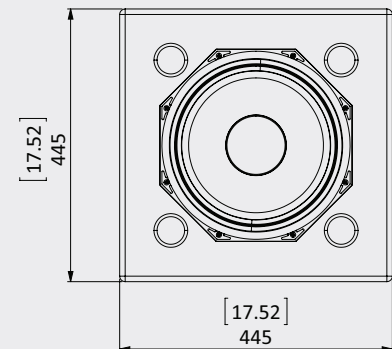
Back view



Side view



Front view



### Corporate offices

Christie Digital Systems USA, Inc.  
Cypress  
ph: 714 236 8610  
Christie Digital Systems Canada Inc.  
Kitchener  
ph: 519 744 8005

### Worldwide offices

Australia  
ph: +61 (0) 7 3624 4888  
Brazil  
ph: +55 (11) 2548 4753  
China (Beijing)  
ph: +86 10 6561 0240  
China (Shanghai)  
ph: +86 21 6030 0500  
Colombia  
ph: +57 (318) 447 3179  
Eastern Europe  
ph: +36 (0)1 47 48 138

France  
ph: +33 (0) 1 41 21 44 04  
Germany (Cologne)  
ph: +49 221 99 512-0  
Germany (Mönchengladbach)  
ph: +49 2161 566200  
India  
ph: +91 (080) 6708 9999  
Japan  
ph: +81 3 3599 7481  
Mexico  
ph: +52 55 4744 1790

Republic of South Africa  
ph: +27 11 251 0000  
Singapore  
ph: +65 6877 8737  
South Korea  
ph: +82 2 702 1601  
Spain  
ph: +34 91 633 9990  
United Arab Emirates  
ph: +971 (0) 4 503 6800  
United Kingdom  
ph: +44 (0) 118 977 8000

United States (Arizona)  
ph: 602 943 5700  
United States (New York)  
ph: 646 779 2014

### Independent sales consultant offices

Italy  
ph: +39 (0) 2 9902 1161  
Russia  
ph: +7 (495) 930 8961



ISO 9001  
ISO 14001  
Wilketon, Ontario

For the most current specification information, please visit [www.christiedigital.com](http://www.christiedigital.com)